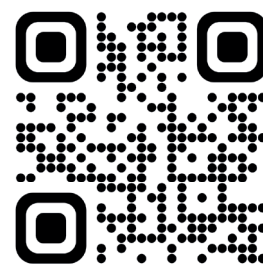


### QUICK START, SERVICE & MAINTENANCE

- Control panel
- Remote control
- KEMARO Web App
- Remote Service Connection
- Daily Maintenance
- Weekly Maintenance

For tutorials and additional information please scan this code.



### CONTROL PANEL

When starting a cleaning program with the control panel, the robot cleans until the battery capacity is low. It then returns to the start position or to the charging station.

#### Main Button

- Short press to turn the device on. The button will light up as soon as the device turns on. The buttons 1, 2, 3 and Homing will blink while the robot is booting up.
- Press and hold >2 seconds to switch the device off.
- Press and hold >10 seconds to force switch off the device.
- When device is in standby the button will blink.

#### Homing

- The robot returns to the start position / charging station.

#### Emptying

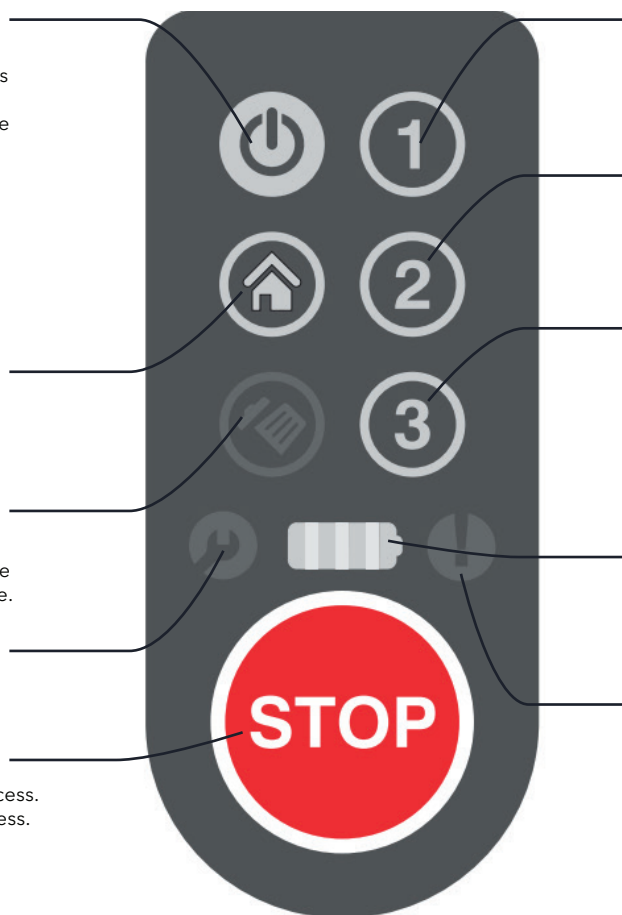
- If illuminated the storage tank needs to be emptied. Pressing the button acknowledge the message.

#### Remote Service Request

- If illuminated the remote service connection is opened.

#### Stop

- Short press to pause cleaning process.
- Long press to abort cleaning process.



#### Random Cleaning \*



- If the robot encounters an obstacle, it turns in a random direction.

#### Wall Following Cleaning \*



- The robot cleans along the nearest wall.

#### Random / Wall-Follow Cleaning \*



- Combination of random and wall follow cleaning.

\* The buttons 1- 3 can be configured in the settings.

#### Battery Indicator

- Indicates the battery level. If the battery is being charged, the display blinks. Switch on the robot to start the charging process.

#### Error Signal

- An error is preventing operation (please view user manual).

## REMOTE CONTROL

The robot can be controlled manually with the remote control. In doing so, the robot switches off its autonomous control. As soon as the remote control is switched on and set to active, the keys 1, 2, 3 and Homing light up on the robot. The robot now only responds to the remote control.

RC active (three-stage)

- 0 = off
- 1 = on with headlight
- 2 = on with beeper + flash light

brush speed

fan (three-stage)

- 0 = off
- 1 = 50 %
- 2 = 100 %

brush backward

forward

all directions

on/off

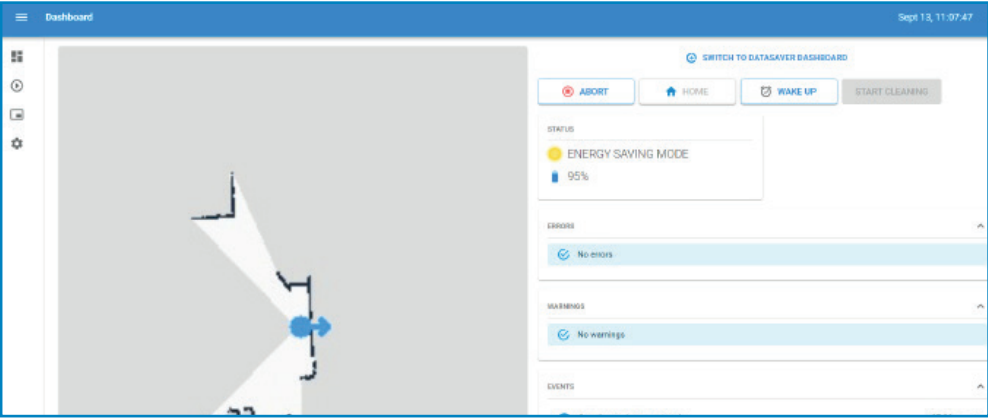


## KEMARO WEB APP

Use the WebApp to do a mapping, define cleaning zones and times, configure all robot settings etc.

### Login Web App

- Connect to KEMARO Hotspot
- Search the URL 10.0.0.1 in your Browser (Chrome or Edge)



## REMOTE SERVICE CONNECTION

To activate the service connection, the button combination

1. STOP
2. HOME

must be pressed **simultaneously**.

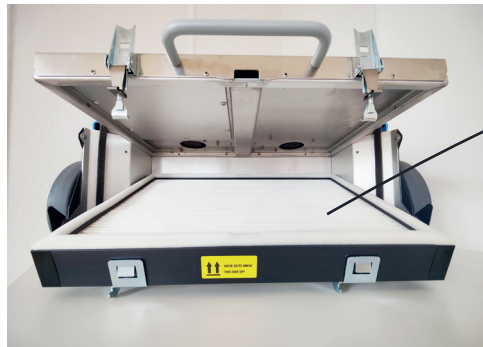
As soon as a service connection is established, the maintenance indicator lights up continuously. Hint: if the indicator goes out again shortly afterwards, there is probably a weak or no LTE signal available.



## MAINTENANCE DAILY & WEEKLY

For stable operation, it is necessary to take good care of the robot. Even in the event of a malfunction, it is advisable to first check the steps indicated.

### DAILY



**(1)** Pull out and empty dirt bin.

**(2)** Clean the filter and use a vacuum, while wear a mask to avoid breathing in small particles. The frequency the filter must be cleaned depends strongly on the dust in the environment.

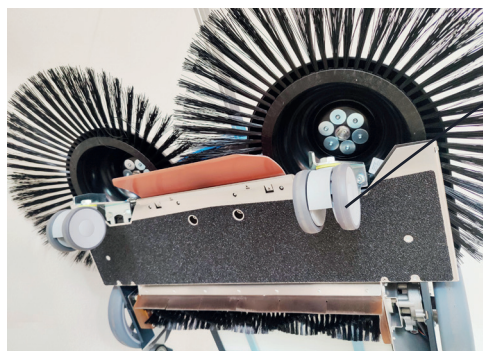
**(3)** Check the disc brushes to ensure there is no material wrapped up around them.



**(4)** Check the Roller Brush to ensure there is no material wrapped around the brush, bearing or drive motor.

**(5)** Check the inside of machine for any remaining dirt / debris.

### WEEKLY



**(1)** Check drop function - swivel caster must be move easily, remove any material or dirt caught in the wheels.



**(2)** Clean LiDAR with compressed air or a soft lint-free or microfiber cloth.







**(3)** Clean both lenses of the 3D Sensor (with a cloth or a cotton swab).



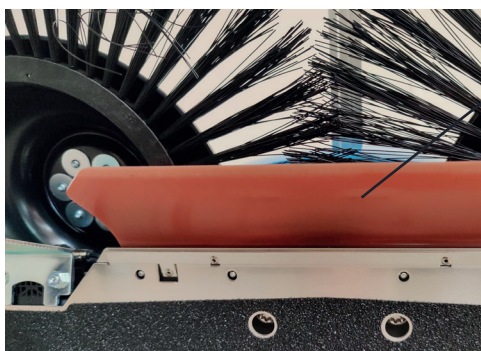
**(4)** Clean charging contacts on the robot and charging station with a cloth.



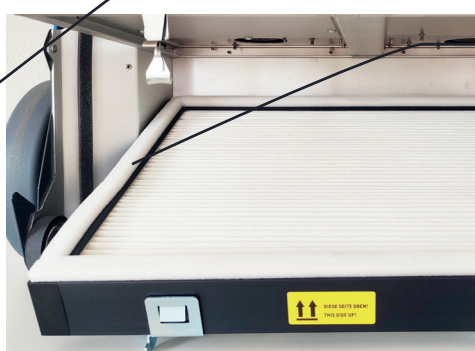
**(5)** Check position of charging station for good contact.



**(6)** Clean reflective Strips.



**(7)** Check the rubber seal strips (sweeper rubber flap and roller brush) for correct position and wear.



**(8)** Check the foam seal in the dirt bin (glued on the inside at the top) and at the robot for wear.